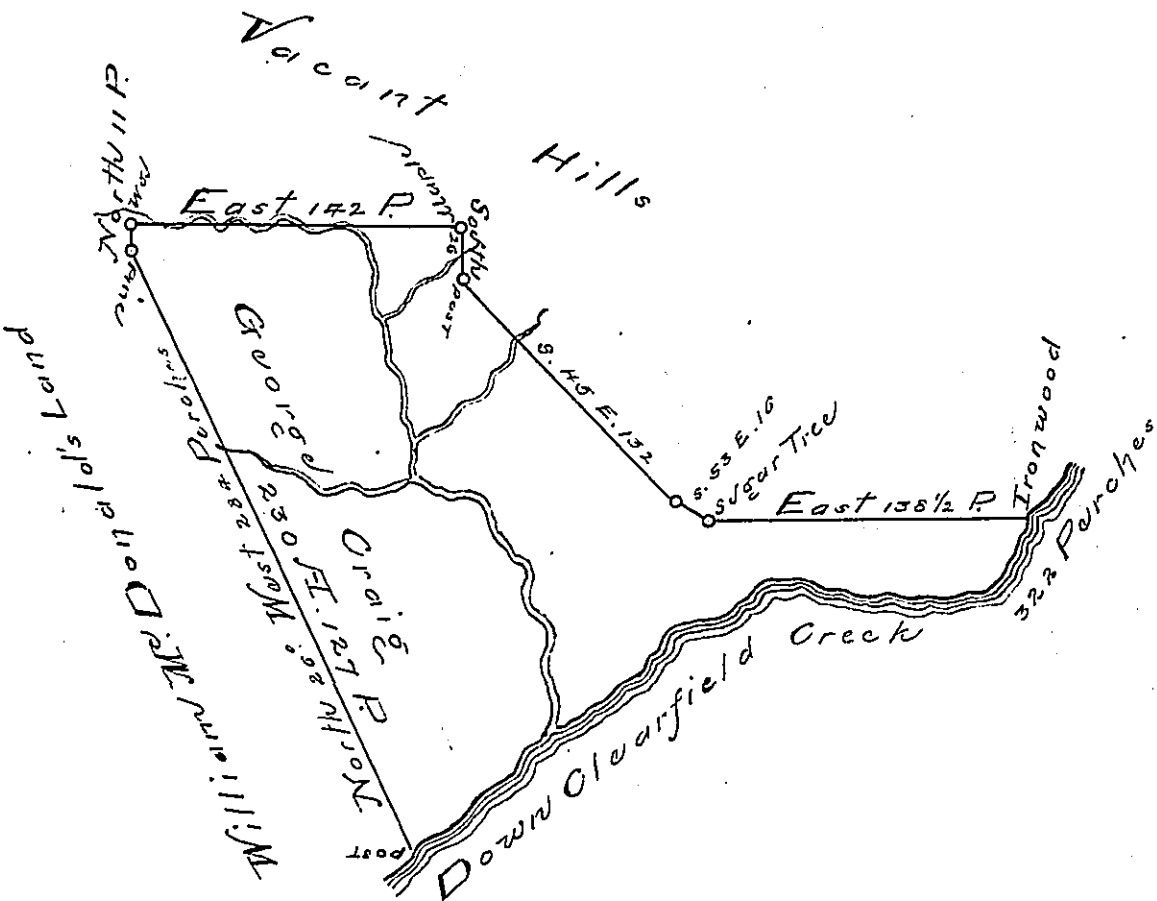


Courses and Distances
Up Clearfield Creek

No	C.	D.
1	S. 24° W.	30
2	S. 78° W.	144
3	N. 89° W.	32
4	N. 80° W.	144
5	N. 65° W.	12
6	S. 88° W.	50
7	S. 56° W.	28
8	S. 85° W.	10
9	S. 50° W.	152
		322 Perches



The above is the Draught of a Tract of Land called Beaver-Dam Bottom, Situated on Clearfield Creek, about a Quarter of a Mile below the old Trading Path leading from Frankstown to Kittanning adjoining Land Surveyed for Wm. McDonald, in Cumberland County, containing Two Hundred and Thirty Acres, One Hundred and Twenty Seven Perches and the Usual Allowance of six P. Cent for Roads &c.

Surveyed the 28th Day of June 1769 for George Craig In pursuance of an Order No 2997 Dated April 8th 1769.

To John Lukens Esq } By Thomas Smith
Surveyor General } D^y Surveyor.

IN TESTIMONY that the above is a copy of the original remaining on file in the Department of Internal Affairs of Pennsylvania, made conformably to an Act of Assembly approved the 16th day of February, 1833, I have hereunto set my Hand and caused the Seal of said Department to be affixed at Harrisburg, this
— sixth — day of — Feb^r — 1895.

James W. Fatta
Secretary of Internal Affairs.